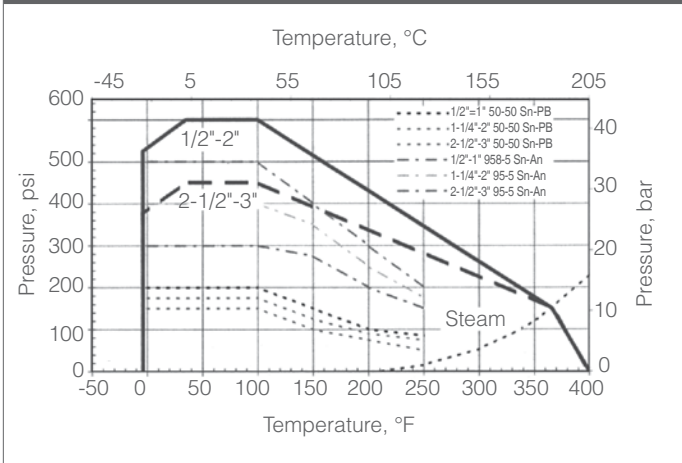



Features

- High integrity hot forged brass body
- Blow-out proof stem
- PTFE seals
- Adjustable PTFE packing with stem O-ring
- 100% tested
- Locking lever operator

Series 666FTTW Pressure-Temperature Ratings

666FTTW Series Full Port Valve

Quick Spec	
Product Scope	
Size Range	1/2" – 3", Full Port
Body Type	2-pc, End Entry with FNPT Ends
Pressure Rating	<=2": 600 psi WOG (41 bar) >2": 450 psi WOG (31 bar)
Temperature Range / WSP	-4°F thru 366°F / 150 psi Steam -20°C thru 186°C / 10,3 bar Steam
Body	Brass, Hot Forged
Trim	Brass, Cr Plated Ball / Ni Plated Stem
Seats	PTFE
Stem Packing/Seals	Adjustable PTFE / FPM O-ring
Operator	Manual Locking Lever
Lubricant	Silicone Free
Design Standards	
Solder End Design	MSS-SP-110
Testing Standards	
Pressure Testing	100% for 24 hours
Approvals	
UL US	WW-V-35C Federal US Specification

Materials of Construction 600 Full Port Series

Part	Material
Body	*Brass CuZn40Pb2
End Cap	*Brass CuZn40Pb2
Ball	*Brass CuZn40Pb2, Cr. Plated
Stem	*Brass CuZn40Pb2, Ni. Plated
Seat	PTFE
Thrust Washer, Stem	CRPTFE
Packing, Stem	PTFE
Gland Nut, Stem	*Brass CuZn40Pb2, Plated
Handle	Steel, Plated
Nut, Handle	*Brass CuZn40Pb2

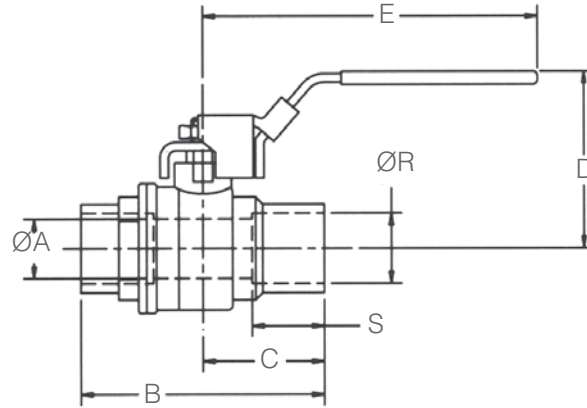
* UNI EN 12165 CW617N (59Cu-40Zn-2Pb) equivalent to Hot Forging Brass UNS C37700 (60Cu-39Zn-2Pb)

Technical Specifications

Valve Size Inches	Flow Coefficient, Cv
1/2"	35.0
3/4"	65
1"	92
1-1/4"	115
1-1/2"	290
2"	405
2-1/2"	590
3"	720

Technical Specifications, metric

Valve Size NPS	Flow Coefficient, Kv
DN15	30,1
DN20	56
DN25	79
DN32	99
DN40	249
DN50	348
DN65	507
DN80	619



MD60023

Dimensions, Inches								
Valve Size	666FTTW Series							
Inches	ØA Port	B Length	C	D	E	ØR Socket Bore	S Socket Depth	Wt (lbs)
1/2"	0.59	2.24	1.18	1.7	3.9	0.627	0.49	0.46
3/4"	0.79	2.85	1.48	2.0	4.7	0.877	0.75	0.75
1"	0.98	3.35	1.67	2.2	4.7	1.128	0.91	1.11
1-1/4"	1.26	3.82	1.91	3.0	6.2	1.378	0.96	1.65
1-1/2"	1.57	4.49	2.24	3.2	6.2	1.628	1.10	2.35
2"	1.97	5.43	2.72	3.5	6.2	2.128	1.34	3.66
2-1/2"	2.56	6.61	3.31	5.2	10.0	2.628	1.48	10.3
3"	3.15	7.60	3.80	5.5	10.0	3.128	1.67	13.7

Dimensions, mm								
Valve Size	666FTTW Series							
NPS	ØA Port	B Length	C	D	E	ØR Socket Bore	S Socket Depth	Wt (kgs)
DN15	15,0	57,0	30,0	43,1	100,0	15,9	12,5	0,21
DN20	20,0	72,5	37,5	50,5	120,0	22,3	19,0	0,34
DN25	25,0	85,0	42,5	54,7	120,0	28,6	23,0	0,50
DN32	32,0	97,0	48,5	75,9	158,0	35,0	24,5	0,75
DN40	40,0	114,0	57,0	82,2	158,8	41,3	28,0	1,07
DN50	50,0	138,0	69,0	88,9	158,8	54,0	34,0	1,66
DN65	65,0	168,0	84,0	132,0	255,0	66,8	37,5	4,69
DN80	80,0	193,0	96,5	140,0	255,0	79,5	42,5	6,20

How to Order							
Body	Ball	Stem	Port	Packing	Seats	Ends	Size
6 = Brass	6 = Brass	6 = Brass	F = Full Port	T = PTFE	T = PTFE	W = Solder	050
							075
							100
							125
							150
							200
							250
							300

Sample Ordering Schematic

6	6	6	F	T	T	W	050
---	---	---	---	---	---	---	-----

Marwin Valve

 A Division of Richards Industries, 3170 Wasson Road, Cincinnati, OH 45209
 toll free. 800.543.7311, local. 513.533.5600, fax. 513.871.0105
 www.marwinvalve.com